

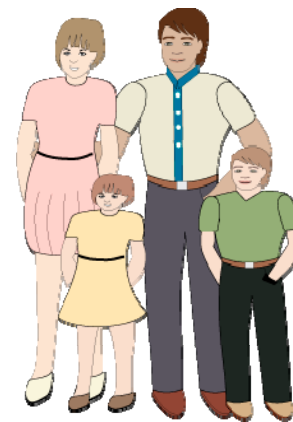
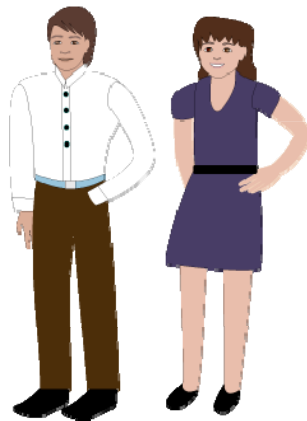
# PERFORMANCE CONTRACT

## Plain Facts

# Performance Contract

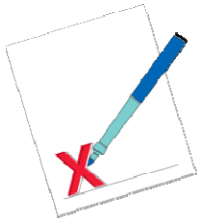


Every year, the Department of Developmental Services (DDS) contracts with regional centers in California to serve consumers and families.



Plain Facts

## What is a Performance Contract?



To follow the law, DDS and each regional center develop a performance contract to determine and help measure how each center delivers services as established by the Lanterman Developmental Disabilities Services Act.



Performance contract measurements, along with examination of its financial claims, is the way to assure funding for each regional center is used appropriately.

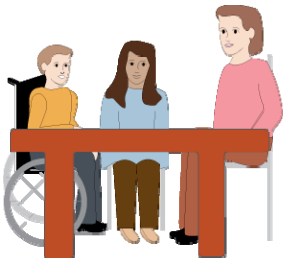
Plain Facts

## Why is it Important?



The performance contract is made up of different outcome areas as determined by DDS for the state of California.

*However,* community input is vital to development of details of the contract:



What each regional center will do that is important in their service area and how they will perform to better serve individuals and families.

## Who Helps Prioritize?



The community helps the regional center prioritize areas of performance to concentrate on and what outcomes they want for people they serve.

The performance contract reflects what each regional center's community determines is important for quality of life and guides activities.



It is intended to provide meaningful results for people served while meeting legal obligations to the state.