



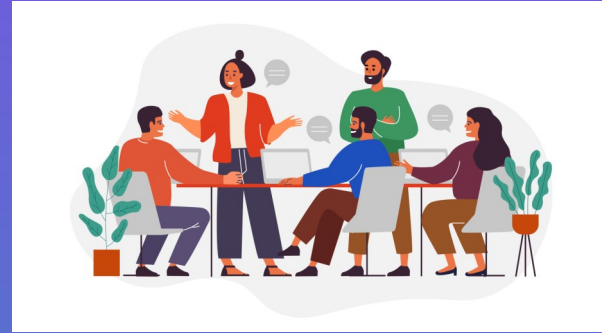
ELARC U: A Learning Community

Service Providers Institute

OVERVIEW OF DEVELOPMENTAL DISABILITIES

ELARC's Assessment & Special Services Division will present this training that will include a basic introduction to:

- ⇒ Autism Spectrum Disorders
- ⇒ Epilepsy and Cerebral Palsy
- ⇒ Intellectual disabilities
- ⇒ Related Pharmacological Issues



When:

Wednesday, August 16, 2023

Time:

9:00am - 12:00pm

Where:

Via Zoom

Fee: \$20

PLEASE NOTE:

Training Certificates will NOT be provided to participants logging in after 20 minutes from the start of training. Make sure to log in at least 5-10 minutes prior to training.



This training is intended for all community programs, ELARC vendors and their new staff.

Pre-registration is REQUIRED

1. Log-in or create an account through ELARC'S Online Portal.
<https://elarcprovider.arclearn.org/Login/Login.aspx>
2. From the home page of the Online Portal, you will see an announcement labeled "Overview of Developmental Disabilities". Make sure to click enroll as indicated.

*A direct zoom link for the training will be made available through the online portal *

For question about your registration please contact, Karen Sibrian at kasibrian@elarc.org

Good Training * Strong Partnerships * Better Service



www.elarc.org *info@elarc.org



REGISTRATION FORM

NOW THAT YOU HAVE PRE-REGISTERED ON THE ELARC TRAINING PORTAL
YOU MUST COMPLETE THE PAYMENT FORM AND MAIL WITH A CHECK TO:

ELARC ATTN: Laiza Valdovinos

Checks must be made to the order of “Eastern Los Angeles Regional Center”

ELARC Community Services Division

ATTN: Laiza Valdovinos

P.O. Box 7916

Alhambra, CA 91802-7916

626-299-4793 email lvaldovinos@elarc.org

Overview of Developmental Disabilities - ADAPTED

Wednesday, August 16, 2023

Time and Location:

9:00am - 12:00pm

Virtually

Name(s): _____

Agency Name: _____

Address: _____

City: _____ State: _____ Zip: _____

Daytime Telephone: _____

E-mail: _____